

High TB burden | High HIV burden | High MDR-TB burden |

Population 2009 (millions) 155

Estimates of burden * 2009	Number (thousands)	Rate (per 100 000 pop)
Mortality (excluding HIV)	100 (82–130)	67 (53–84)
Prevalence (incl HIV)	770 (360–1 300)	497 (231–811)
Incidence (incl HIV)	460 (370–550)	295 (240–356)
Incidence (HIV-positive)	120 (95–140)	75 (62–91)
Case detection, all forms (%)	19 (16–24)	

Case notifications 2009

New cases	(%)	Retreatment cases	(%)
Smear-positive	44 863 (52)	Relapse	2 626 (32)
Smear-negative	37 540 (44)	Treatment after failure	774 (9)
Smear unknown	0 (0)	Treatment after default	1 628 (20)
Extrapulmonary	3 560 (4)	Other	3 123 (38)
Other	0 (0)		
Total new	85 963	Total retreatment	8 151
Total < 15 years	1 515		

Total new and relapse	88 589	(94% of total)
Total cases notified	94 114	

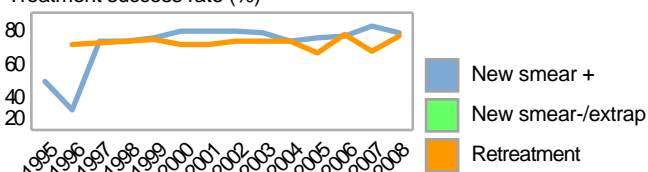
Drug regimens

Rifampicin used throughout treatment	No
% of patients treated with fixed-dose combinations (FDCs)	100
Paediatric formulations procured	Yes

Treatment success rate 2008 (%)

New smear-positive	78
New smear-negative/extrapulmonary	
Retreatment	76

Treatment success rate (%)



MDR-TB, Estimates among notified cases * 2008

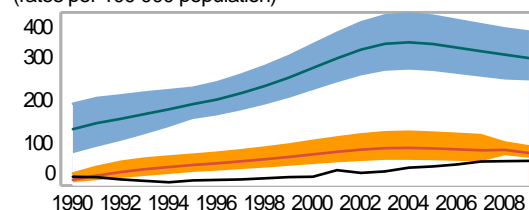
% of new TB cases with MDR-TB	1.8 (0.0–4.3)
% of retreatment TB cases with MDR-TB	7.7 (0.0–18)
Estimated MDR-TB cases among new pulmonary TB cases notified in 2009	1 500 (0–3 500)
Estimated MDR-TB cases among retreated pulmonary TB cases notified in 2009	630 (0–1 500)

MDR-TB reported cases 2009	New	Retreat-ment	Total
Cases tested for MDR-TB	17	25	52
% of notified tested for MDR-TB	<1	<1	<1
Confirmed cases of MDR-TB	12	11	28
MDR-TB patients started treatment			0

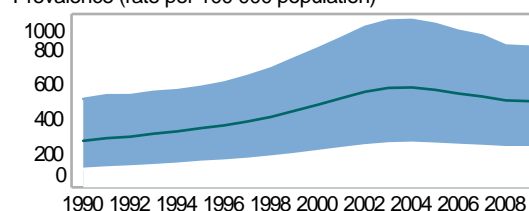
Laboratories	2008	2009	2010
Smear (per 100 000 population)	0.6	0.7	0.6
Culture (per 5 million population)	<0.1	0.1	0.2
DST (per 10 million population)	0.2	0.2	0.3

Second-line DST available	Outside country
National Reference Laboratory	Yes

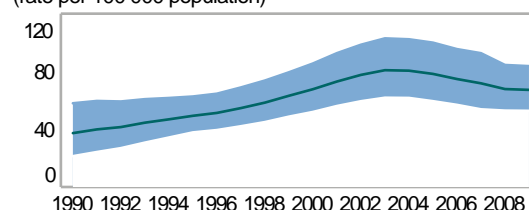
Incidence (HIV+TB in orange), notifications (black) (rates per 100 000 population)



Prevalence (rate per 100 000 population)



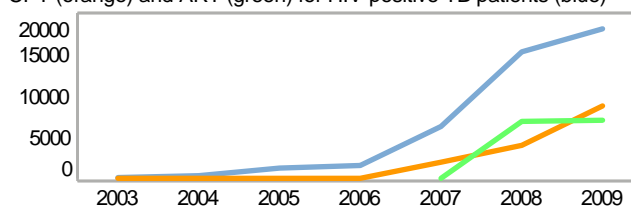
Mortality excluding HIV (rate per 100 000 population)



TB/HIV 2009

TB patients with known HIV status	70 693
% of TB patients with known HIV status	75
TB patients that are HIV-positive	18 087
% of tested TB patients that are HIV-positive	26
% HIV-positive TB patients started on CPT	48
% HIV-positive TB patients started on ART	39
HIV-positive people screened for TB	195 112
HIV-positive people provided with IPT	1 853

CPT (orange) and ART (green) for HIV-positive TB patients (blue)



Financing	2010	2011
Total budget (US\$ millions)	37	39
Available funding (US\$ millions)	28	28
% of budget funded	74	73
% available funding from domestic sources	22	21
% available funding from Global Fund	55	54

NTP Budget (blue) and available funding (green) (US\$ millions)

